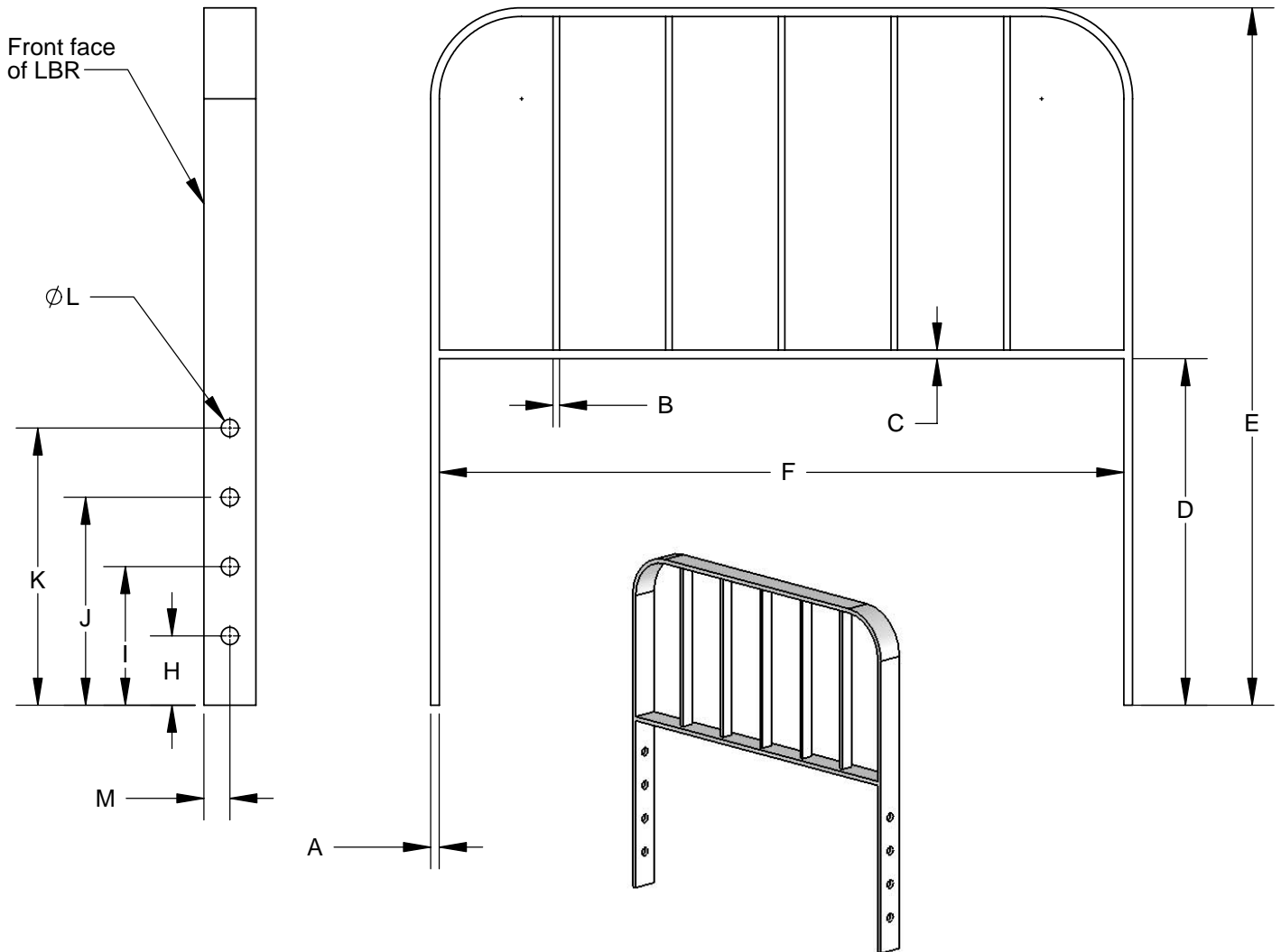


# Side Mount Load Backrest



- A. Outside support bar: .50 x 3.0 (13mm x 76mm)
- B. Inside support bar: .38 x 2.5 (10mm x 64mm)
- C. Lower support bar: .50 x 3.0 (13mm x 76mm)
- D. Length of leg
- E. Height of LBR
- F. Width of LBR
- G. n/a
- H. Centerline of first hole
- I. Centerline of second hole
- J. Centerline of third hole
- K. Centerline of fourth hole
- L. Drilled hole diameter
- M. Centerline of hole from front of leg

